

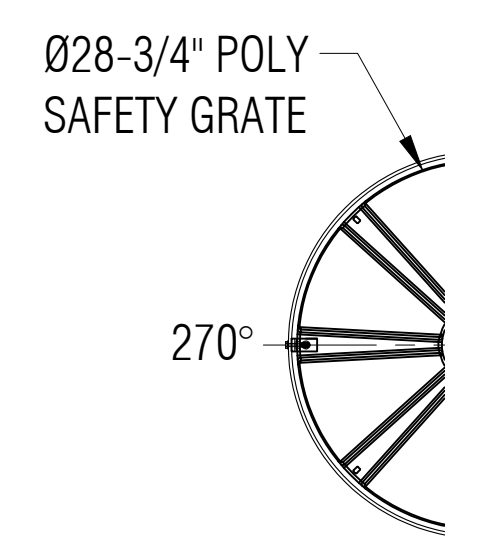
EXTERIOR SURF  
(0.13mm to 0.31mm Thick)

STRUCTURAL LAMINATE  
(5.00mm Thick)

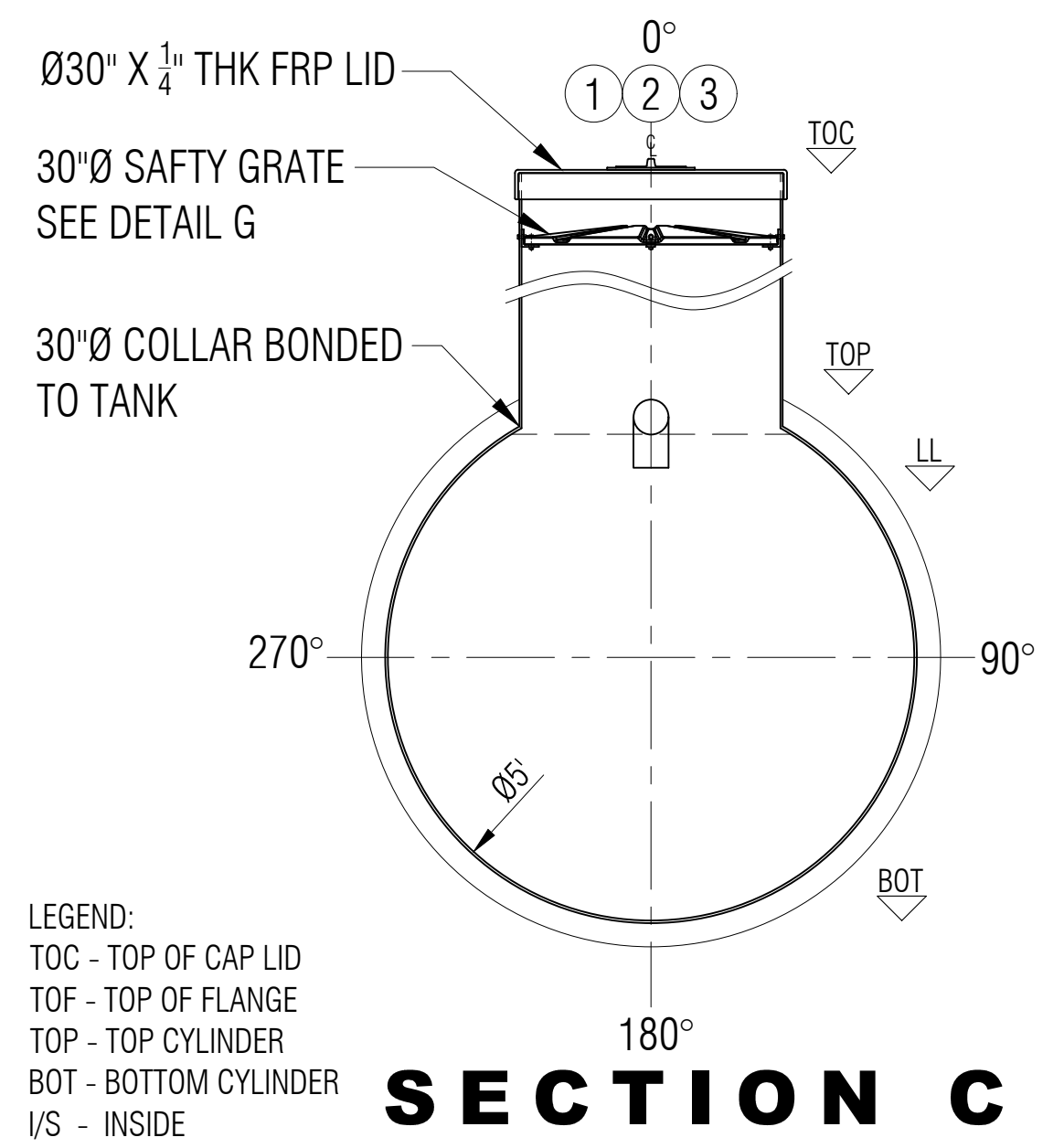
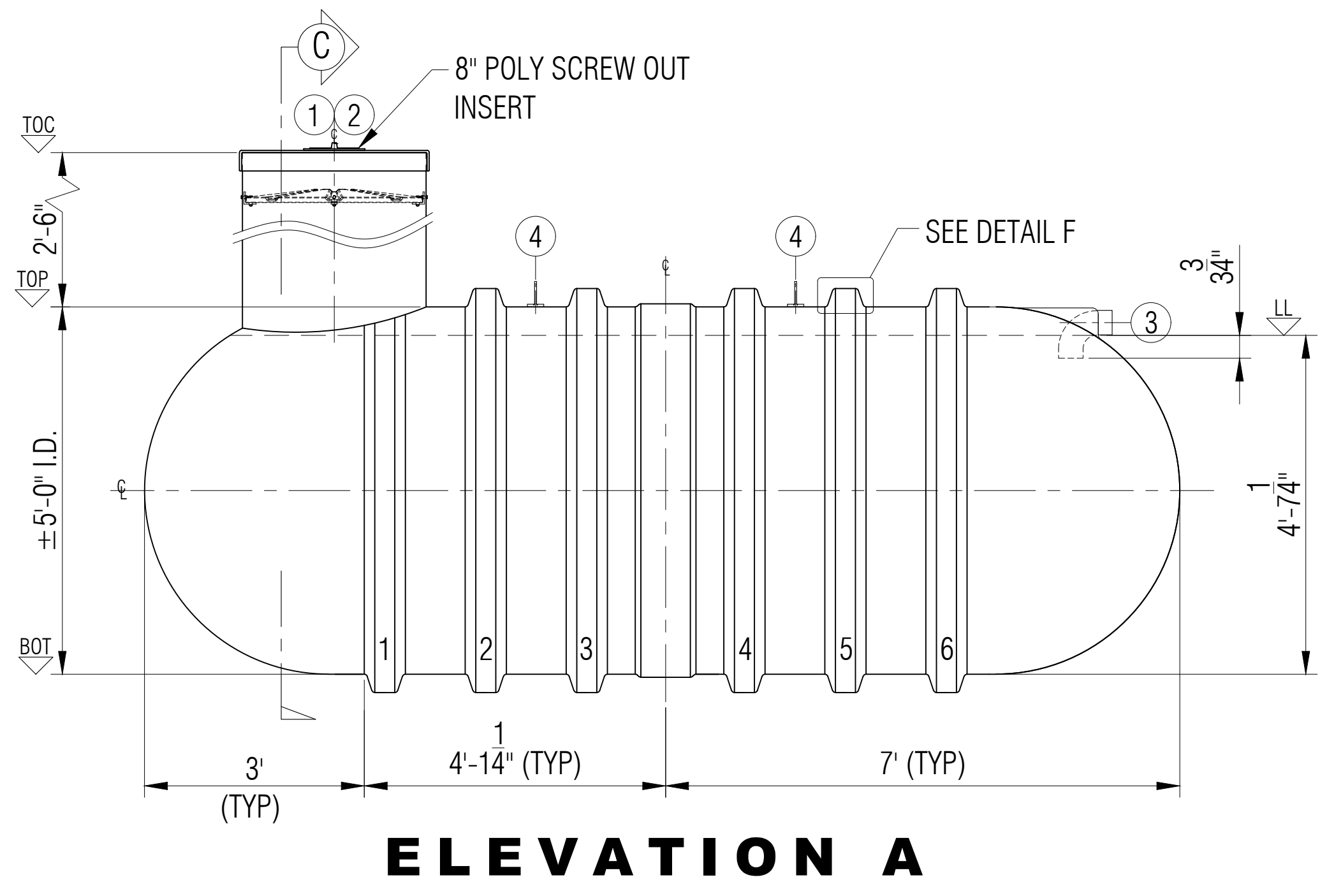
ANTI-WICKING EPOXY  
(along w/chemical resistant layer - total 2.5mm Thick)

INTERIOR CHEMICAL-RESISTANT LAYER (0.25mm Thick)

STRUCTURAL FRP TANK SINGLE WALL



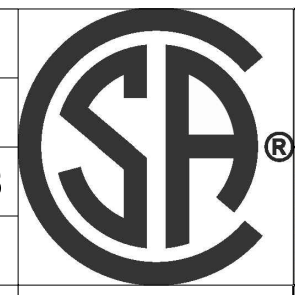
5 SAFE DEVICES



LEGEND:  
 TOC - TOP OF CAP LID  
 TOF - TOP OF FLANGE  
 TOP - TOP CYLINDER  
 BOT - BOTTOM CYLINDER  
 I/S - INSIDE  
 LL - LIQUID LEVEL  
 O.A.H.-OVERALL HEIGHT  
 O.A.L.-OVERALL LENGTH  
 I/S - INSIDE  
 O/S - OUTSIDE  
 Ø - DIAMETER  
 ° - DEGREE/S  
 TYP- TYPICAL  
 CL - CENTER LINE  
 NTS - NOT TO SCALE

GENERAL NOTES:  
 - CSA B66 CERTIFIED FRP SEWAGE HOLDING TANK.  
 - RATED FOR 2' OF BURIAL DEPTH AND NO TRAFFIC LOADING.  
 -- ALL DRILLED HOLES FLANGES TO BE COATED WITH RESIN.  
 - SAFETY DEVISE CAN WITHSTAND 91 KG. OF DEAD LOAD.  
 - DIMENSIONS SHOWN IN FEET INCHES FORMAT OTHERWISE NOTED.  
 - 1/2" FABRICATION TOLERANCE. DOES NOT APPLY TO LAMINATE THICKNESS.

ITEM#	QTY	PART LIST	DESCRIPTION	SHELL THICKNESS:	0.280"	DRAWN:	ATF
1	1	30" CAP LID W/ 8"D POLY SCREW OUT INSERT	FPR LID	DISH HEAD THICKNESS:	0.280"	CHECKED:	
2	1	30"Ø MANWAY COLLAR	30"Ø FRP MANWAY	RIBS THICKNESS:	0.25" WITH 1 WR	DATE:	JUNE 12, 2023
3	1	4" PVC-DWV 90°	INLET	RIB SPACING:	16-1/2" CL TO CL	DESIGNED:	
4	2	MID STEEL	LIFT LUGS	WEIGHT:	340KG (750LBS)	APPROVED:	MPS
5	1	POLYETHYLENE SAFETY GRATE C/W HARDWARE	SAFETY GRATE	LENGTH:	4,267MM (14'-0")	MFG:	DS
6				WORKING CAPACITY:	6,540 L (1,438 IG/1,726 USG)	QA:	GA
7				OVERALL CAPACITY:	6,820 L (1,500 IG/1,800 USG)	SALES:	TA



CLIENT: H  
 TITLE: C  
 SCALE: 1:2