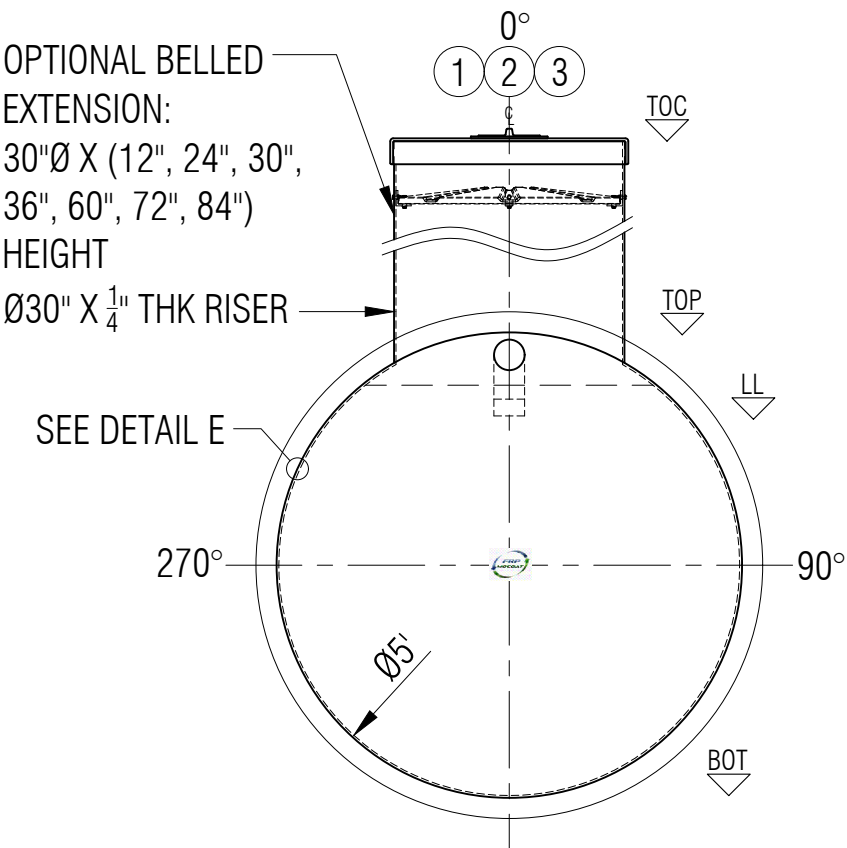
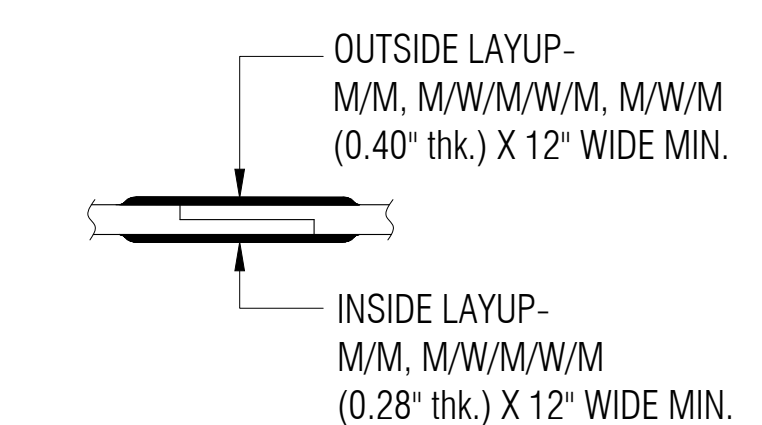


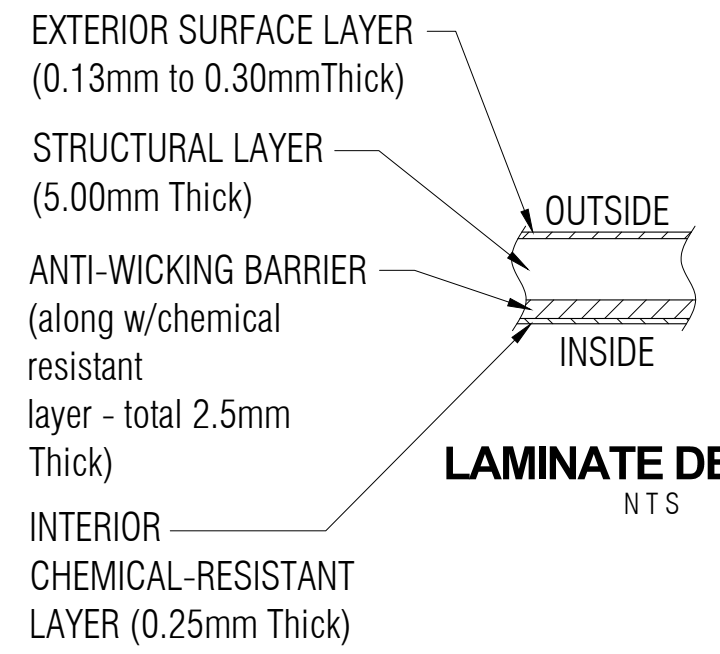
**PLAN**



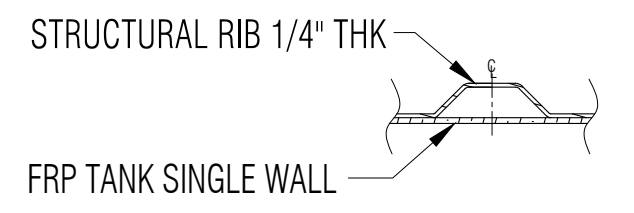
**ELEVATION B**



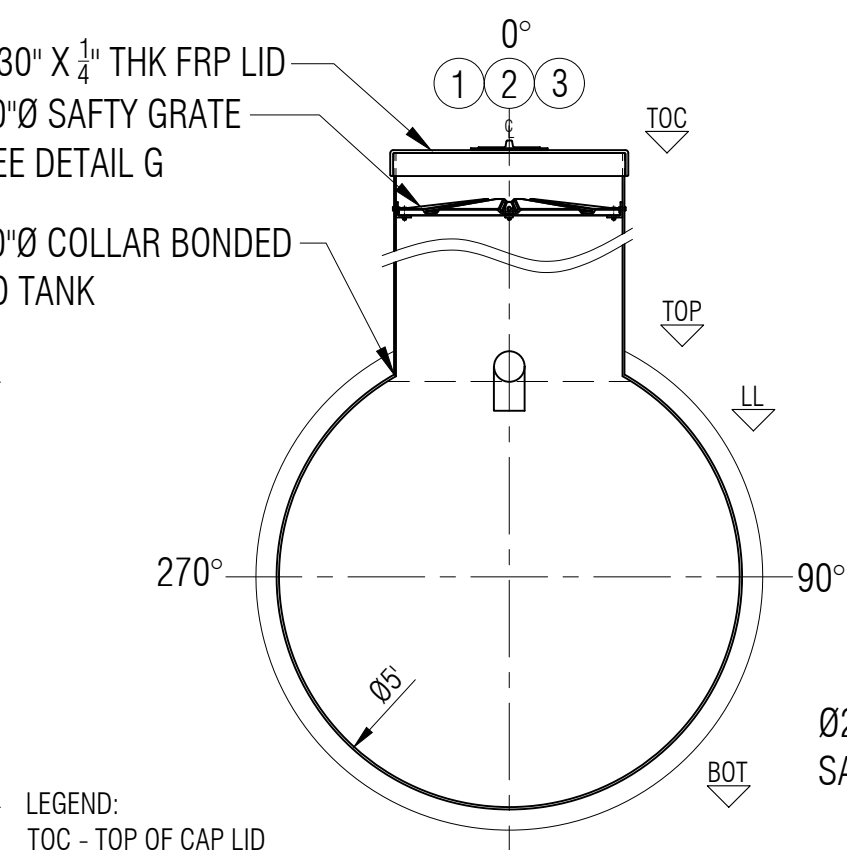
**TYPICAL BODY JOINT DETAIL D**  
NTS



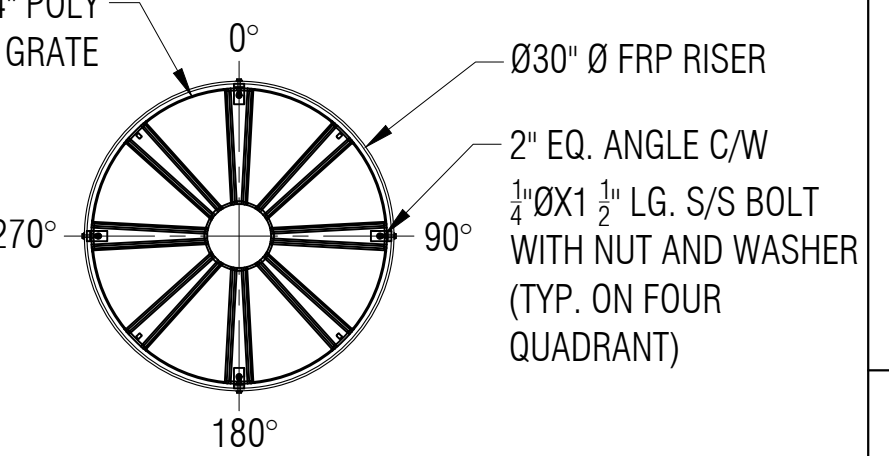
**LAMINATE DETAIL E**  
NTS



**RIB LAMINATE DETAIL F**  
NTS

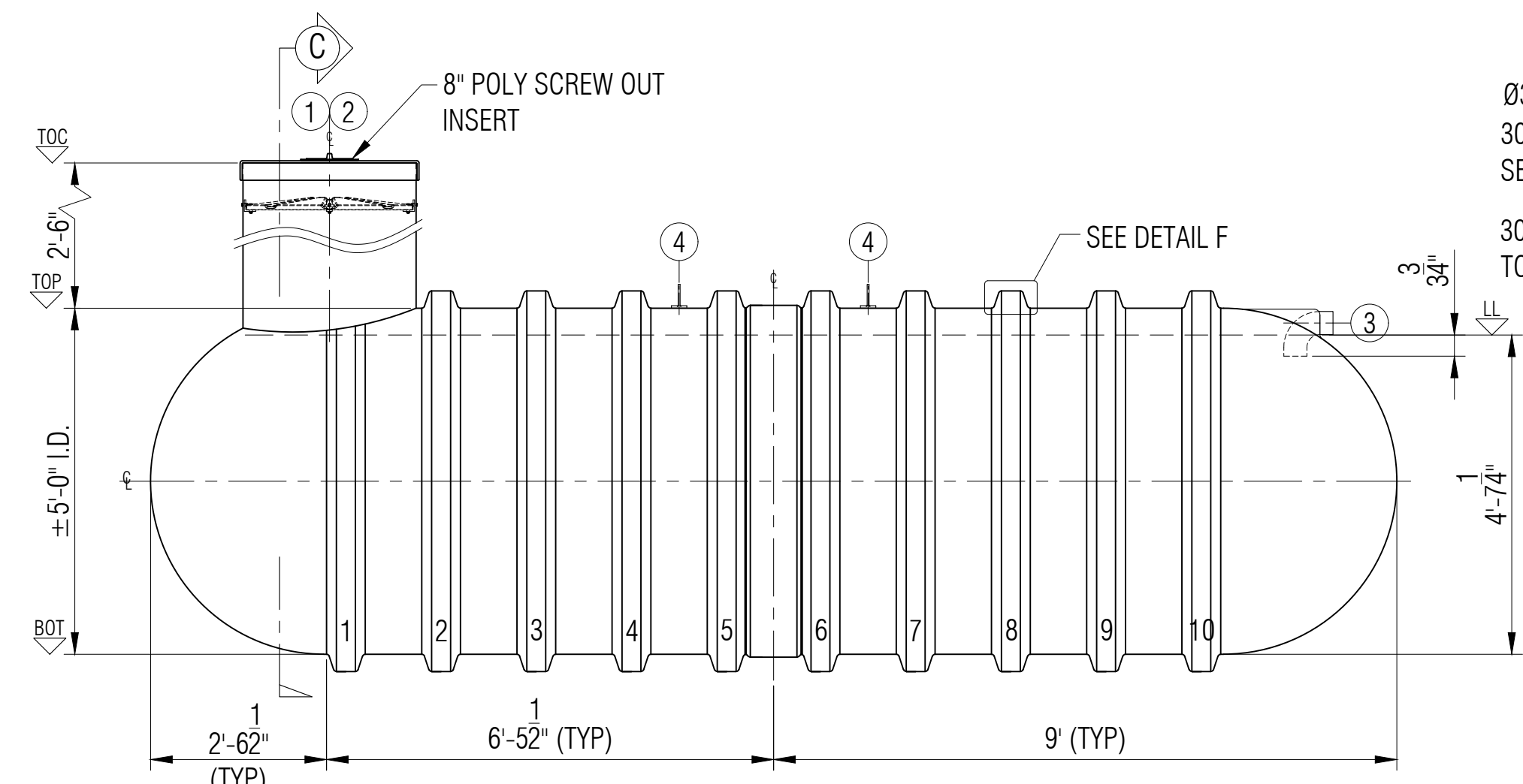


**SECTION C**



**SAFETY GRATE DETAIL G**  
SCALE: 1:15

LEGEND:  
 TOC - TOP OF CAP LID  
 TOF - TOP OF FLANGE  
 TOP - TOP CYLINDER  
 BOT - BOTTOM CYLINDER  
 I/S - INSIDE  
 LL - LIQUID LEVEL  
 O.A.H. - OVERALL HEIGHT  
 O.A.L. - OVERALL LENGTH  
 I/S - INSIDE  
 O/S - OUTSIDE  
 Ø - DIAMETER  
 ° - DEGREE/S  
 TYP - TYPICAL  
 CL - CENTER LINE  
 NTS - NOT TO SCALE



**ELEVATION A**

GENERAL NOTES:  
 - CSA B66 CERTIFIED FRP SEWAGE HOLDING TANK.  
 - RATED FOR 12' OF BURIAL DEPTH AND NO TRAFFIC LOADING.  
 - ALL DRILLED HOLES FLANGES TO BE COATED WITH RESIN.  
 - SAFETY DEVICE CAN WITHSTAND 91 KG. OF DEAD LOAD.  
 - DIMENSIONS SHOWN IN FEET INCHES FORMAT OTHERWISE NOTED.  
 - 1/2" FABRICATION TOLERANCE. DOES NOT APPLY TO LAMINATE THICKNESS.

ITEM#	QTY	PART LIST	DESCRIPTION	SHELL THICKNESS:	0.346"	DRAWN:	ATF
1	1	30" CAP LID W/ 8"Ø POLY SCREW OUT INSERT	FRP LID	DISH HEAD THICKNESS:	0.351"	CHECKED:	
2	1	30"Ø MANWAY COLLAR	30"Ø FRP MANWAY	RIBS THICKNESS:	0.25" WITH 1 WR	DATE:	JUNE 13, 2023
3	1	4" PVC-DWV 90°	INLET	RIB SPACING:	16-1/2" CL TO CL	DESIGNED:	
4	2	MID STEEL	LIFT LUGS	WEIGHT:	453KG (1,000LBS)	APPROVED:	MPS
5	1	POLYETHYLENE SAFETY GRATE C/W HARDWARE	SAFETY GRATE	LENGTH:	5,486MM (18'-0")	MFG:	DS
6				WORKING CAPACITY:	8,414 L (1,850 IG/2,200 USG)	QA:	GA
7				OVERALL CAPACITY:	9,092 L (2,000 IG/2,400 USG)	SALES:	TA



CLIENT: FRP/MOCOAT FIBERGLASS LTD.		TITLE: <b>H2000-DB FRP SEWAGE HOLDING TANK</b>	
FRP MOCOAT FIBERGLASS LTD.		SIZE: C	DRAWING NUMBER: H2000-DB
SCALE: 1:25	WEIGHT:	REVISION: 0	SHEET: 1/1
BURIAL DEPTH:	RATED 12'-0"		