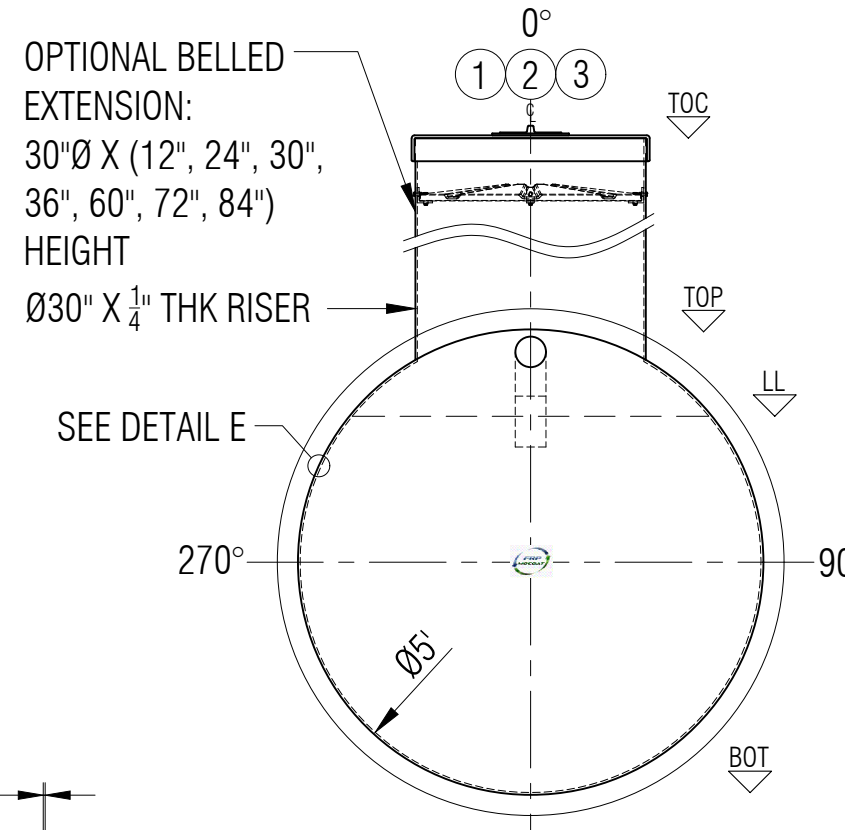
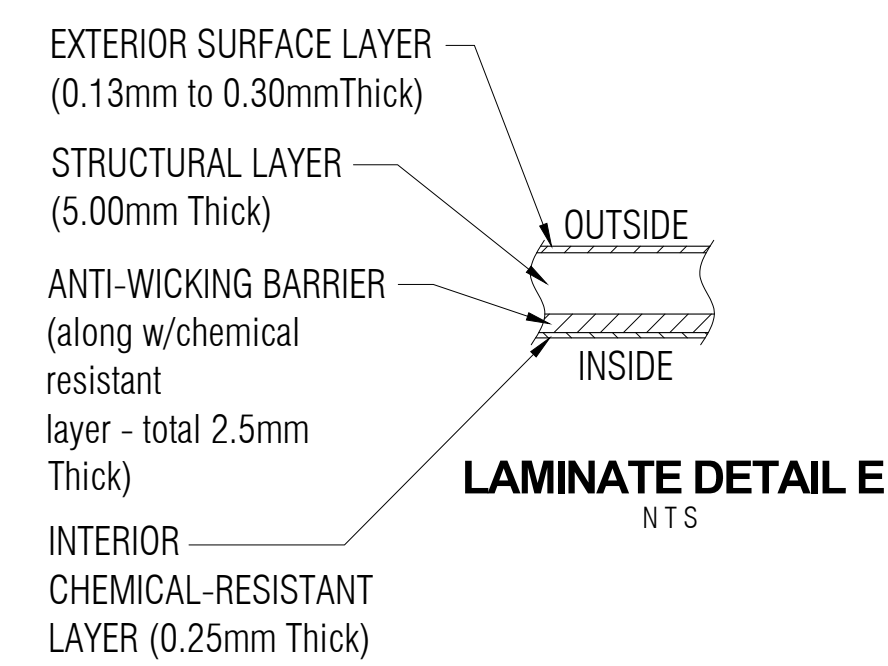


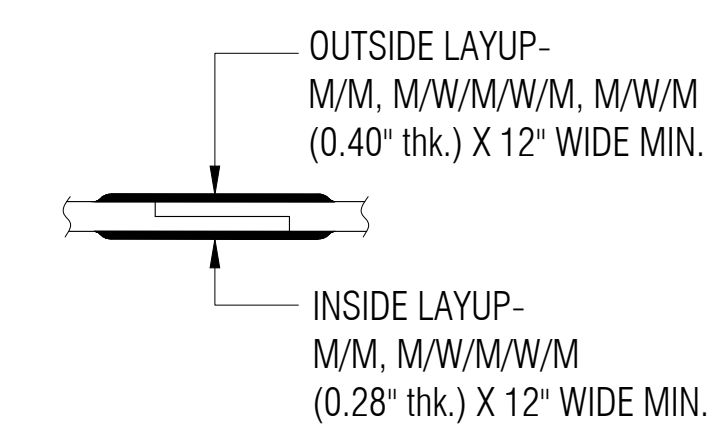
PLAN



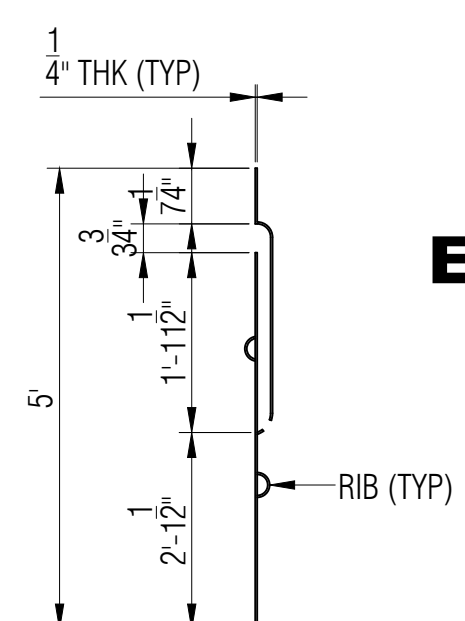
ELEVATION B



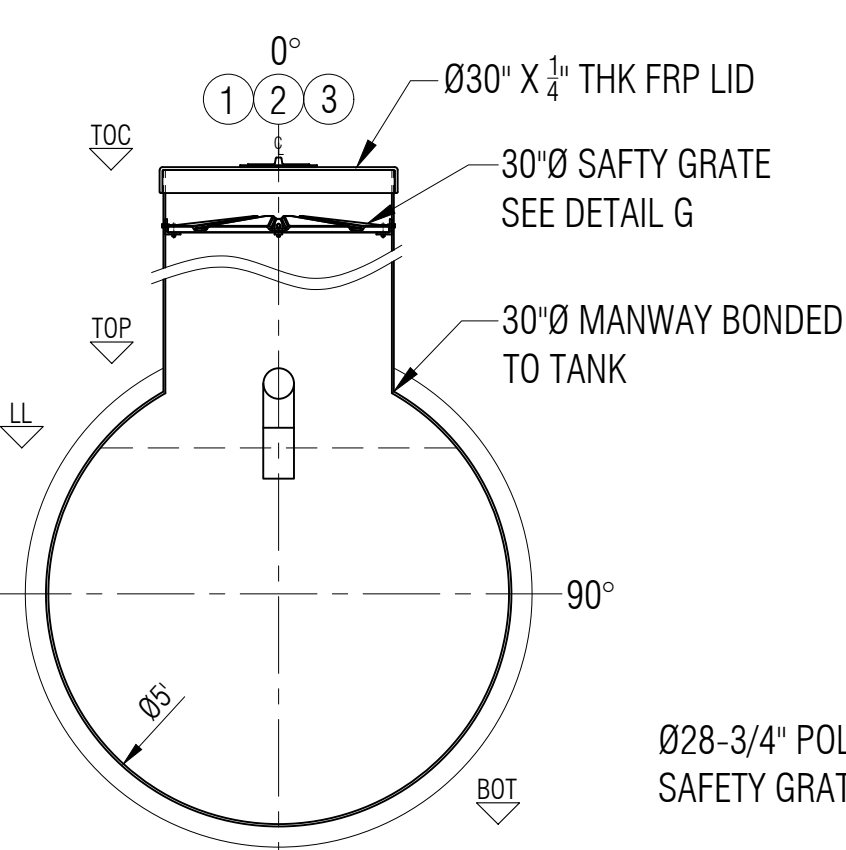
LAMINATE DETAIL E
NTS



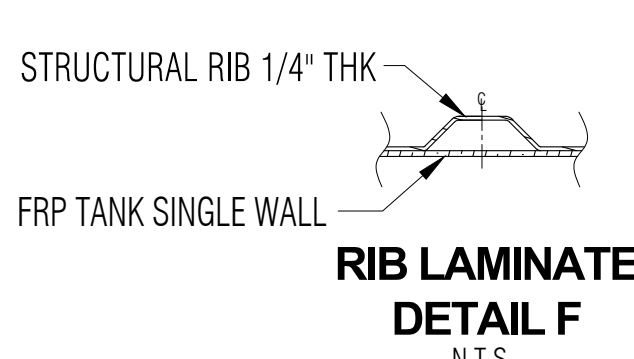
TYPICAL BODY JOINT DETAIL D
NTS



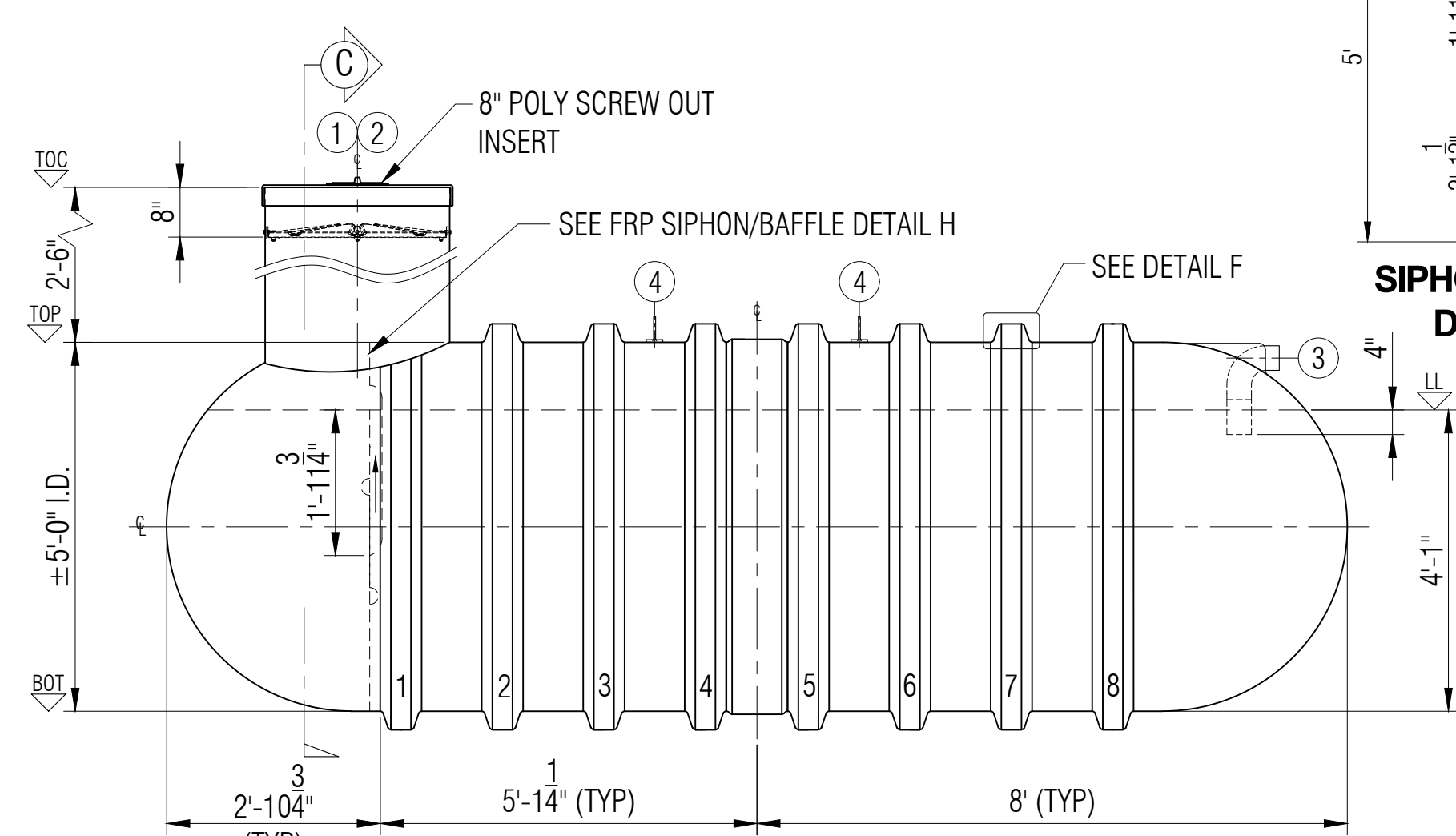
SIPHON/BAFFLE DETAIL H



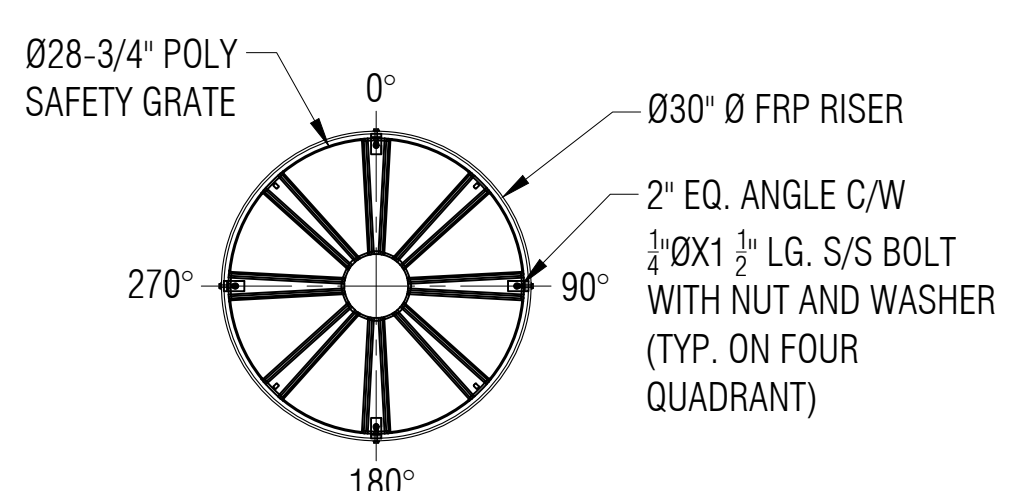
SECTION C



RIB LAMINATE DETAIL F
NTS



ELEVATION A



SAFETY GRATE DETAIL G
SCALE: 1:15

LEGEND:
 TOC - TOP OF CAP LID
 TOF - TOP OF FLANGE
 TOP - TOP CYLINDER
 BOT - BOTTOM CYLINDER
 I/S - INSIDE
 LL - LIQUID LEVEL
 O.A.H.-OVERALL HEIGHT
 O.A.L.-OVERALL LENGTH
 I/S - INSIDE
 O/S - OUTSIDE
 Ø - DIAMETER
 ° - DEGREE/S
 TYP- TYPICAL
 CL - CENTER LINE
 NTS - NOT TO SCALE

GENERAL NOTES:
 - CSA B66 CERTIFIED FRP SEPTIC TANK.
 - RATED FOR 12' OF BURIAL DEPTH AND NO TRAFFIC LOADING.
 - BAFFLE WALL IS INSTALLED. VOLUMES ARE APPROXIMATE.
 - ALL DRILLED HOLES FLANGES TO BE COATED WITH RESIN.
 - SAFETY DEVISE CAN WITHSTAND 91 KG. OF DEAD LOAD.
 - DIMENSIONS SHOWN IN FEET INCHES FORMAT OTHERWISE NOTED.
 - 1/2" FABRICATION TOLERANCE. DOES NOT APPLY TO LAMINATE THICKNESS.

ITEM#	QTY	PART LIST	DESCRIPTION	SHELL THICKNESS: 0.346"	DRAWN: ATF
1	1	30" CAP LID W/ 8"D POLY SCREW OUT INSERT	FRP LID	DOME HEAD THICKNESS: 0.351"	CHECKED:
2	1	30"Ø MANWAY COLLAR	30"Ø FRP MANWAY	RIBS THICKNESS: 0.30" WITH 1 WR	DATE: JUNE 20, 2023
3	1	4" PVC-DWV 90°	INLET	WEIGHT: 510KG (1,125LBS)	DESIGNED:
4	1	FRP FULL BAFFLE WALL W/ REINFORCEMENT	BAFFLE WALL	LENGTH: 4,877MM (16'-0")	APPROVED: MPS
5	2	MILD STEEL LUGS	LIFT LUGS	SEPTIC CHAMBER: 6,070L (1,335IG/1,602 USG)	MFG: DS
6	1	POLYETHYLENE SAFETY GRATE C/W HARDWARE	SAFETY GRATE	EFFLUENT CHAMBER: 963L (212IG/254 USG)	QA: GA
7				OVERALL CAPACITY: 7,955L (1,750IG/2,100 USG)	SALES: TA

CLIENT: FRP/MOCOAT FIBERGLASS LTD.
 TITLE: **P1750-DB FRP PUMPOUT TANK**

FRP MOCOAT
FIBERGLASS LTD.

SIZE: C	DRAWING NUMBER: P1750-DB	REVISION: 0
SCALE: 1:25	WEIGHT:	SHEET: 1/1
BURIAL DEPTH:	RATED 12'-0"	