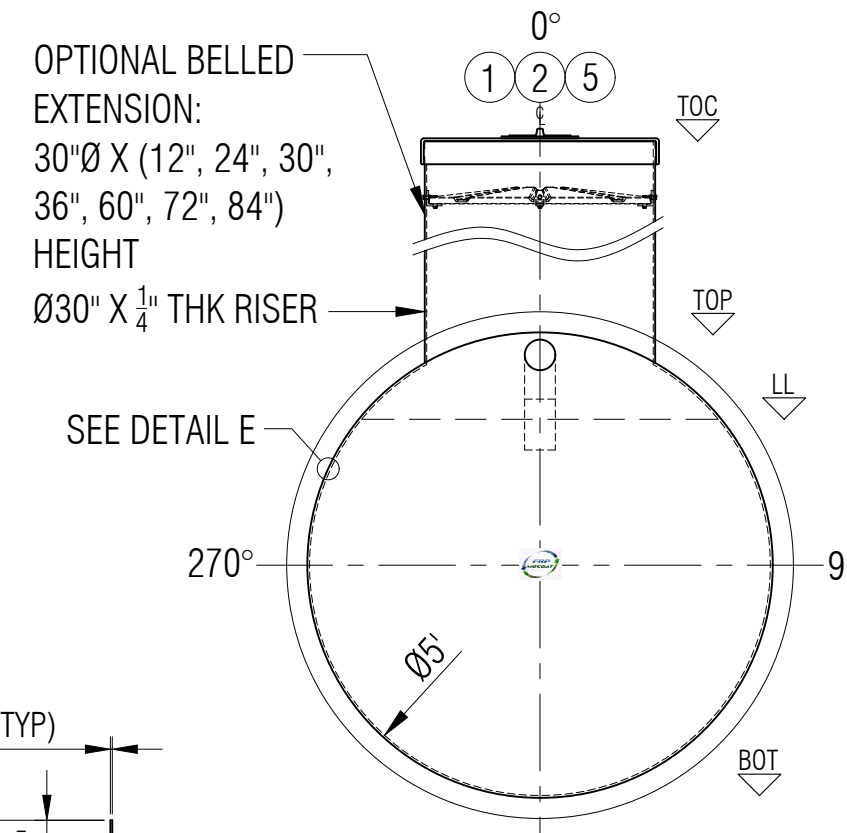
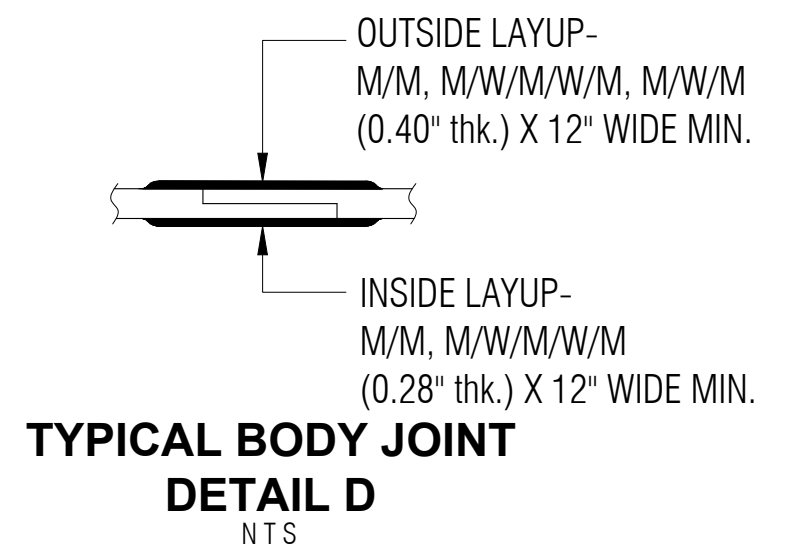


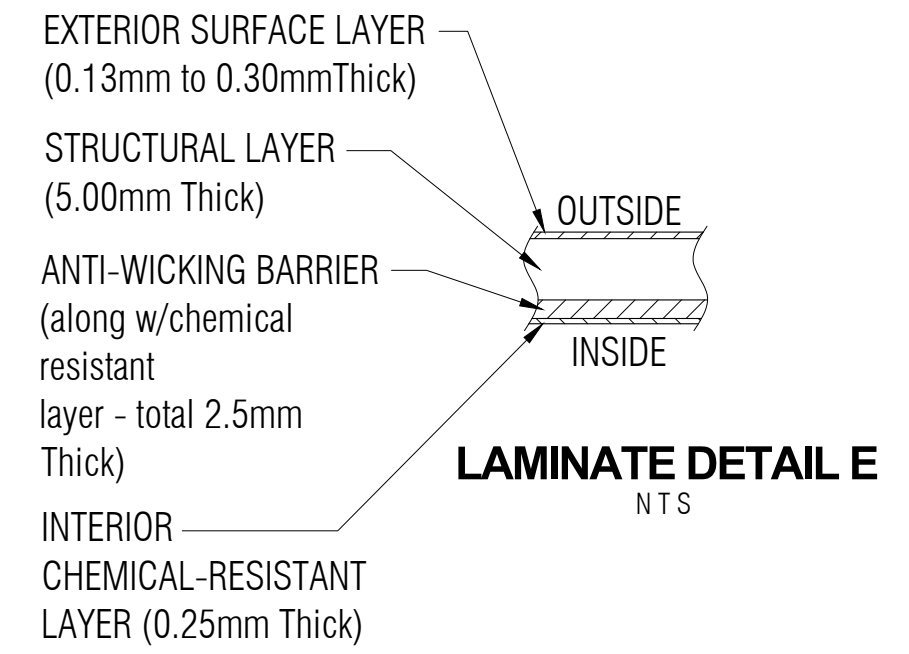
**PLAN**



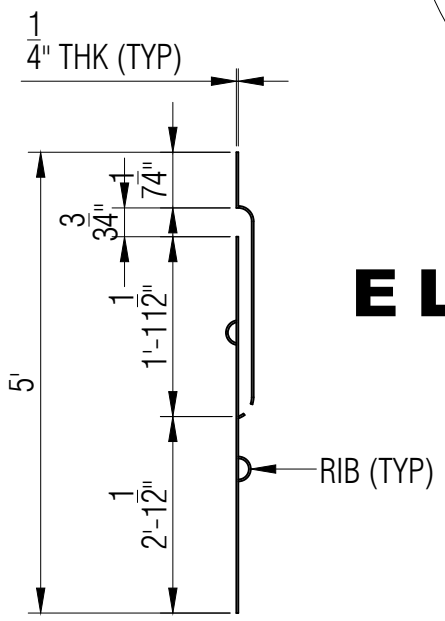
**ELEVATION B**



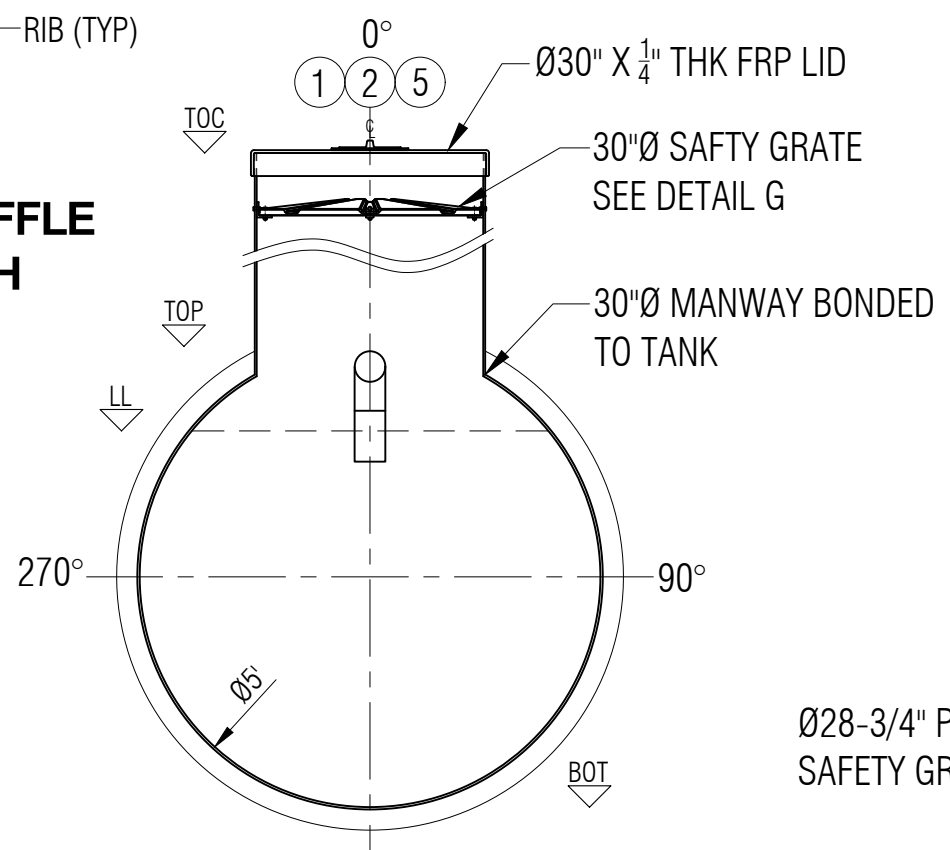
**TYPICAL BODY JOINT DETAIL D**  
NTS



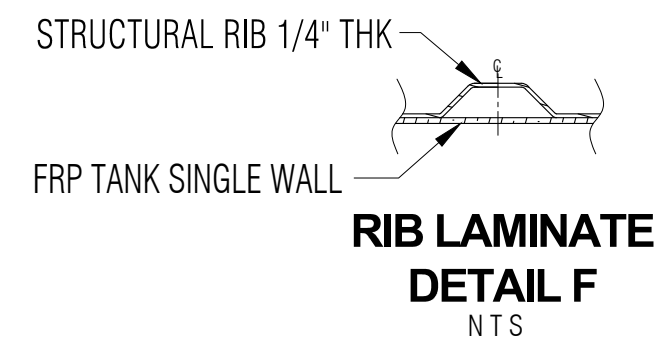
**LAMINATE DETAIL E**  
NTS



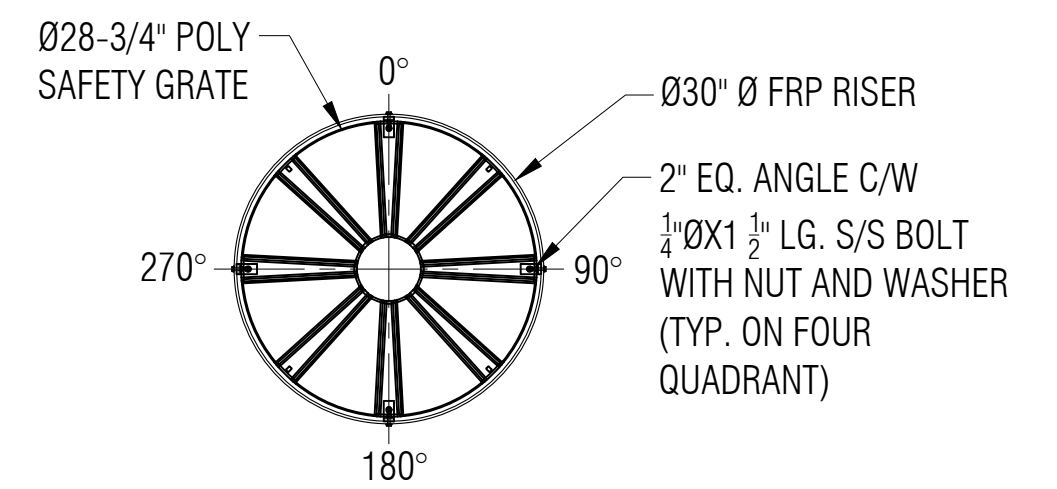
**SIPHON/BAFFLE DETAIL H**



**SECTION C**

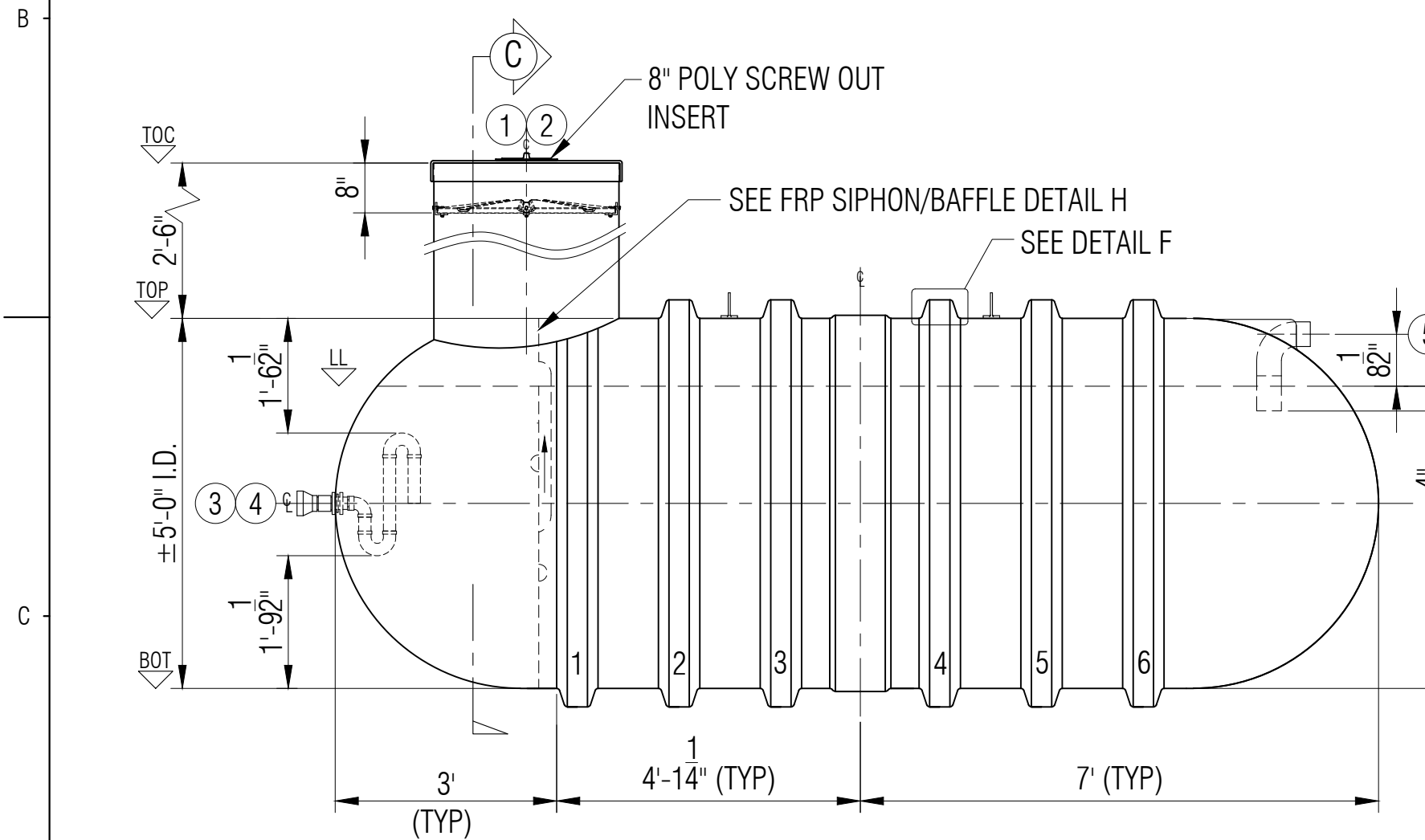


**RIB LAMINATE DETAIL F**  
NTS



**SAFETY GRATE DETAIL G**  
SCALE: 1:15

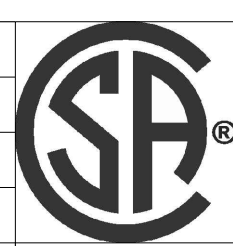
LEGEND:  
 TOC - TOP OF CAP LID  
 TOF - TOP OF FLANGE  
 TOP - TOP CYLINDER  
 BOT - BOTTOM CYLINDER  
 I/S - INSIDE  
 LL - LIQUID LEVEL  
 O.A.H.-OVERALL HEIGHT  
 O.A.L.-OVERALL LENGTH  
 I/S - INSIDE  
 O/S - OUTSIDE  
 Ø - DIAMETER  
 ° - DEGREE/S  
 TYP- TYPICAL  
 CL - CENTER LINE  
 NTS - NOT TO SCALE



**ELEVATION A**

**GENERAL NOTES:**  
 - CSA B66 CERTIFIED FRP SEPTIC TANK.  
 - RATED FOR 7' OF BURIAL DEPTH AND NO TRAFFIC LOADING.  
 - BAFFLE WALL IS INSTALLED. VOLUMES ARE APPROXIMATE.  
 - ALL DRILLED HOLES FLANGES TO BE COATED WITH RESIN.  
 - SAFETY DEVISE CAN WITHSTAND 91 KG. OF DEAD LOAD.  
 - DIMENSIONS SHOWN IN FEET INCHES FORMAT OTHERWISE NOTED.  
 - 1/2" FABRICATION TOLERANCE. DOES NOT APPLY TO LAMINATE THICKNESS.

| ITEM# | QTY | PART LIST                                 | DESCRIPTION      | SHELL THICKNESS:     | 0.300"                     | DRAWN:    | ATF          |
|-------|-----|---|------------------|----------------------|----------------------------|-----------|--------------|
| 1     | 1   | 30" CAP LID W/ 8" D POLY SCREW OUT INSERT | FPR LID          | DISH HEAD THICKNESS: | 0.300"                     | CHECKED:  |              |
| 2     | 1   | 30" Ø MANWAY COLLAR                       | 30" Ø FRP MANWAY | RIBS THICKNESS:      | 0.25" WITH 1 WR            | DATE:     | MAY 31, 2023 |
| 3     | 1   | 2" PVC-DWV SIPHON                         | SIPHON-O         | WEIGHT:              | 397KG (875LBS)             | DESIGNED: |              |
| 4     | 1   | 2" PVC-DWV SIPHON INSIDE ASSEMBLY         | SIPHON-I         | LENGTH:              | 4,267MM (14'-0")           | APPROVED: | MPS          |
| 5     | 1   | 4" PVC-DWV 90°                            | INLET            | SEPTIC CHAMBER:      | 5,092L (1,120IG/1,344 USG) | MFG:      | DS           |
| 6     | 1   | FRP FULL BAFFLE WALL W/ REINFORCEMENT     | BAFFLE WALL      | EFFLUENT CHAMBER:    | 963L (212IG/254 USG)       | QA:       | GA           |
| 7     | 1   | POLYETHYLENE SAFETY GRATE C/W HARDWARE    | SAFETY GRATE     | OVERALL CAPACITY:    | 6,819L (1,500IG/1,800 USG) | SALES:    | TA           |



|                                     |                       |                        |           |
|-------------------------------------|-----------------------|------------------------|-----------|
| CLIENT: FRP/MOCOAT FIBERGLASS LTD.  |                       | REVISION               |           |
| TITLE: <b>S1500 FRP SIPHON TANK</b> |                       | 0                      |           |
| <b>FRP MOCOAT</b>                   |                       | <b>FIBERGLASS LTD.</b> |           |
| SIZE: C                             | DRAWING NUMBER: S1500 | WEIGHT:                | SHEET 1/1 |
| SCALE: 1:25                         | BURIAL DEPTH:         | RATED 7'-0"            |           |