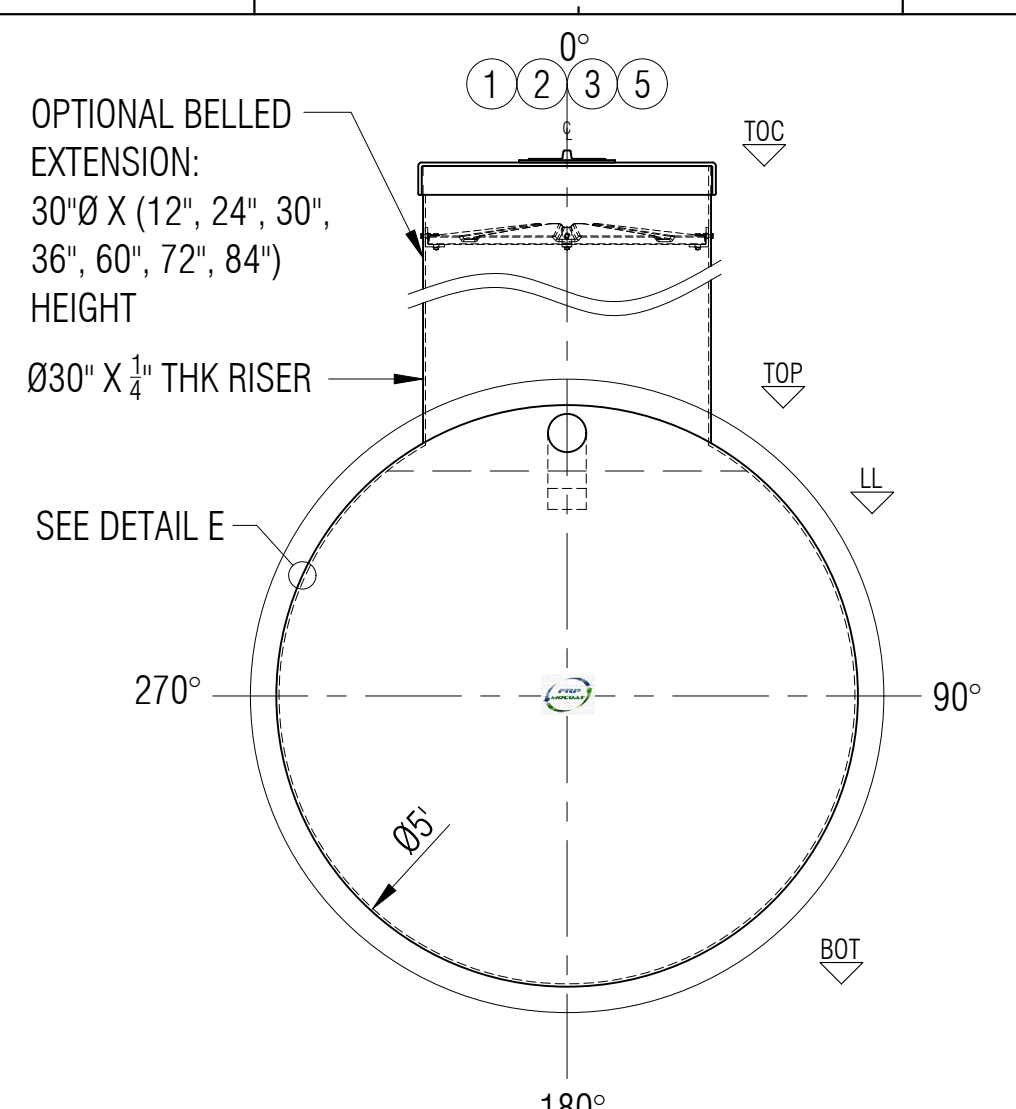
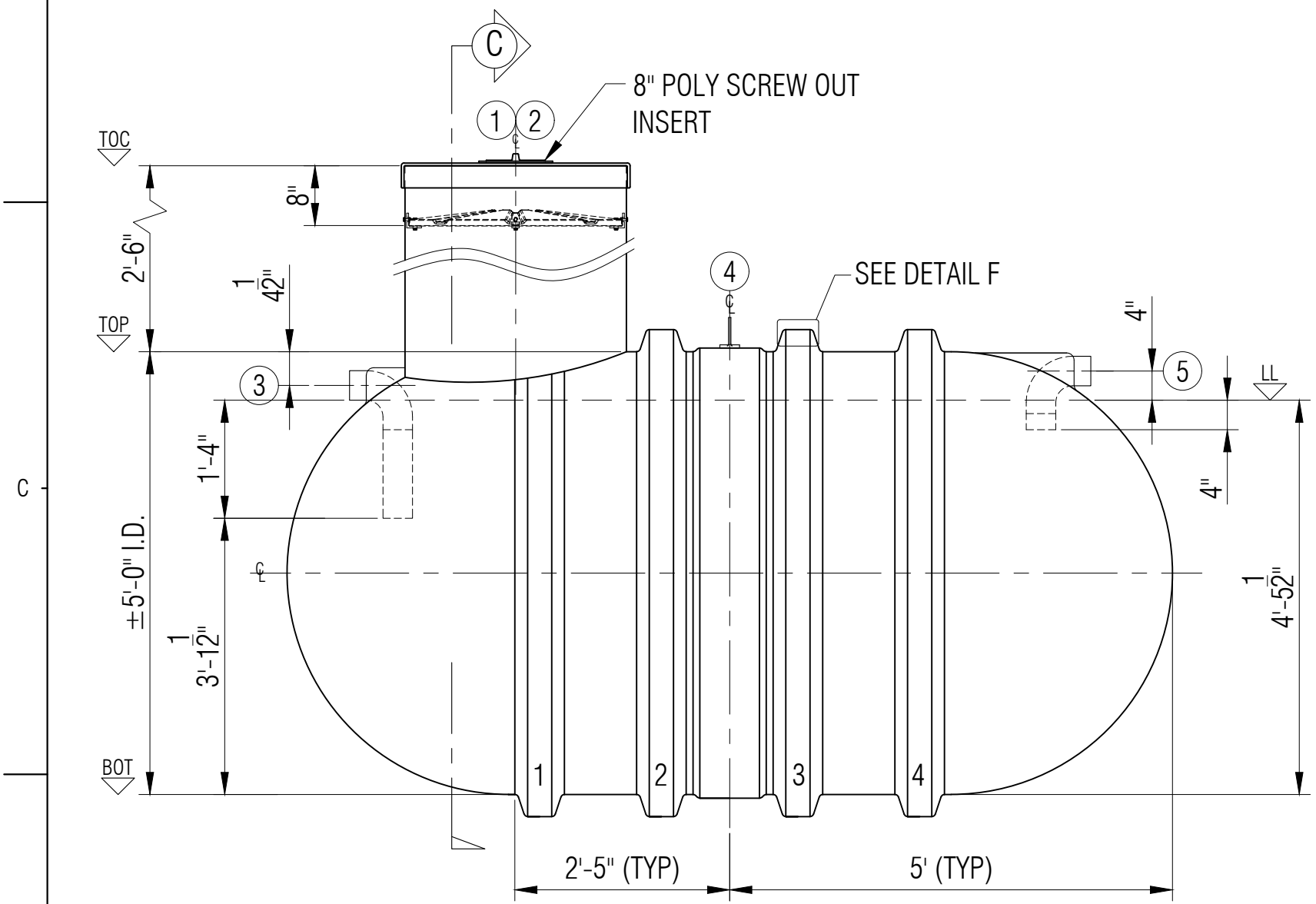


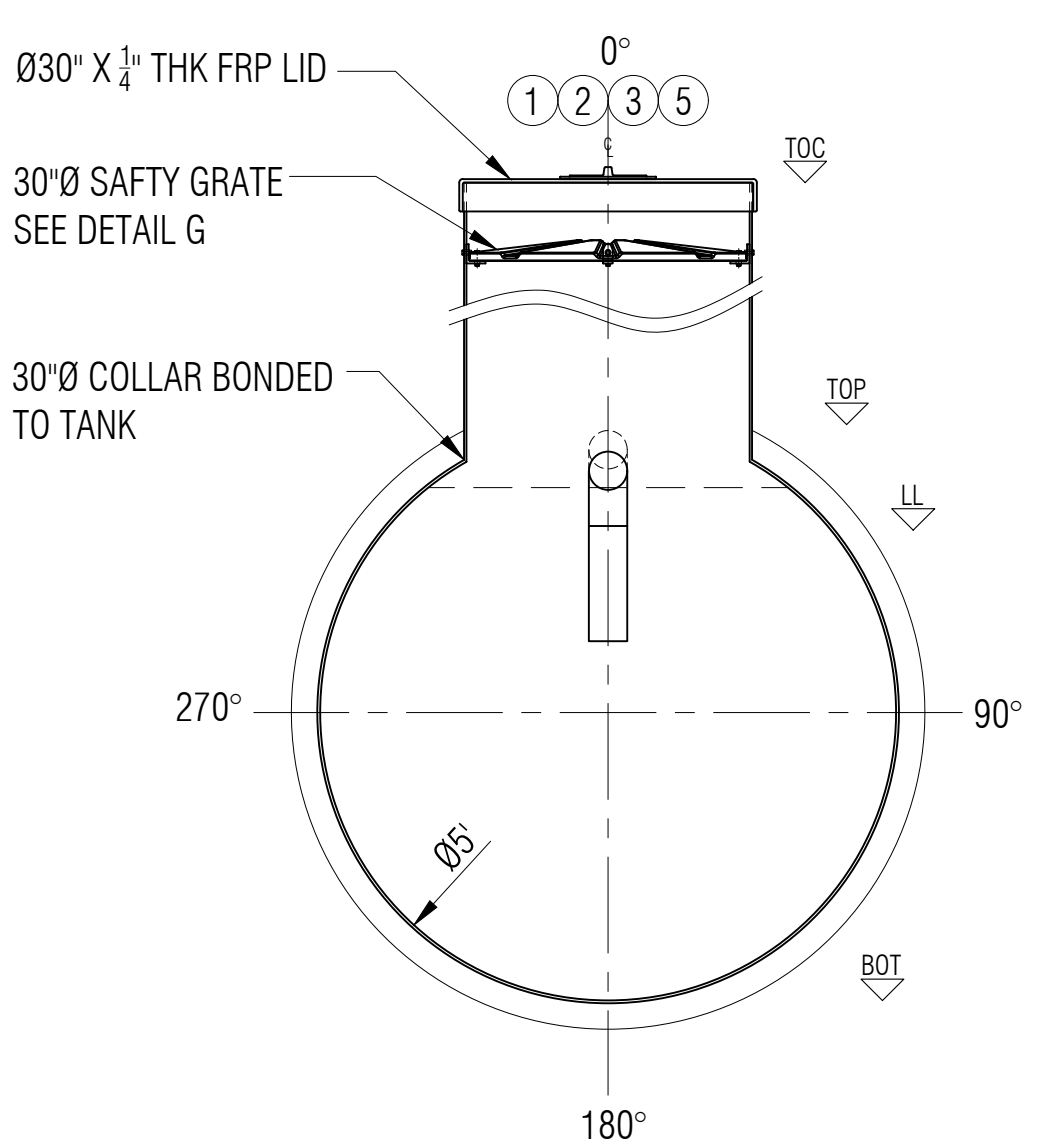
**PLAN**



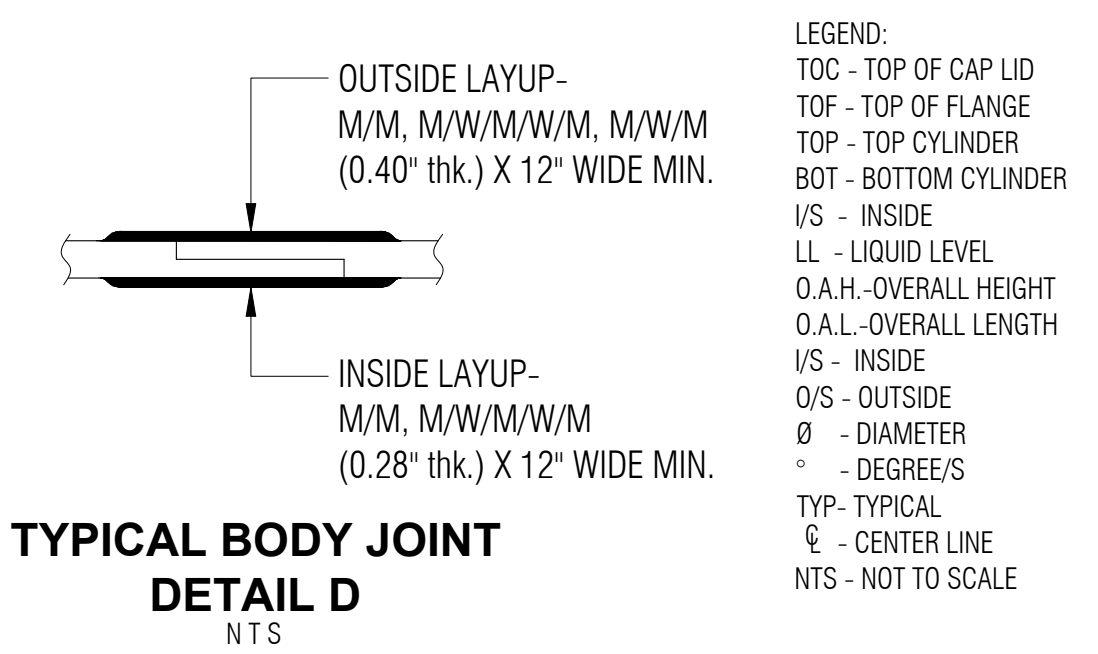
**ELEVATION B**



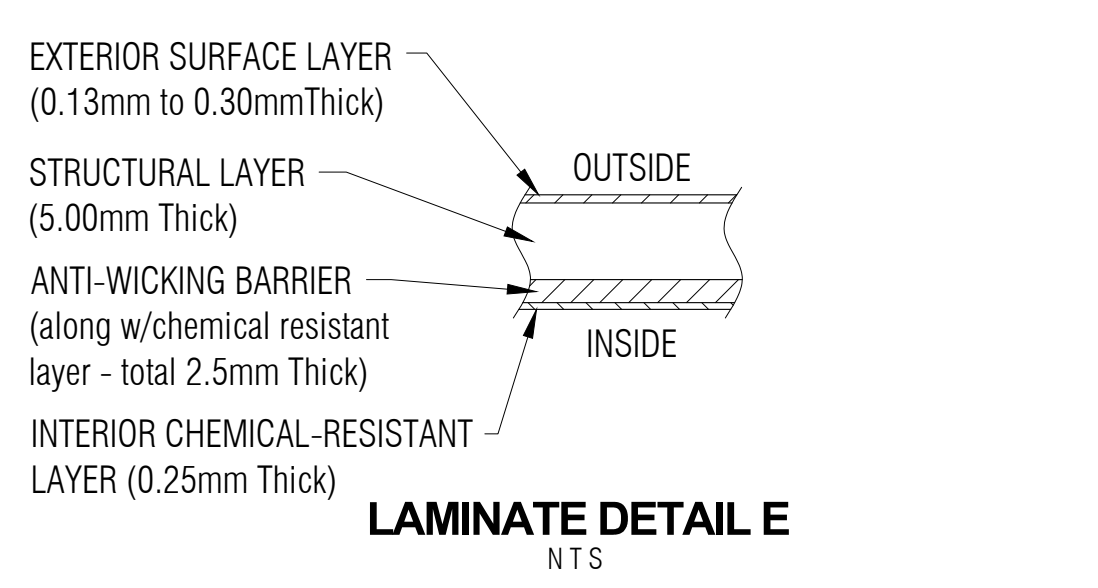
**ELEVATION A**



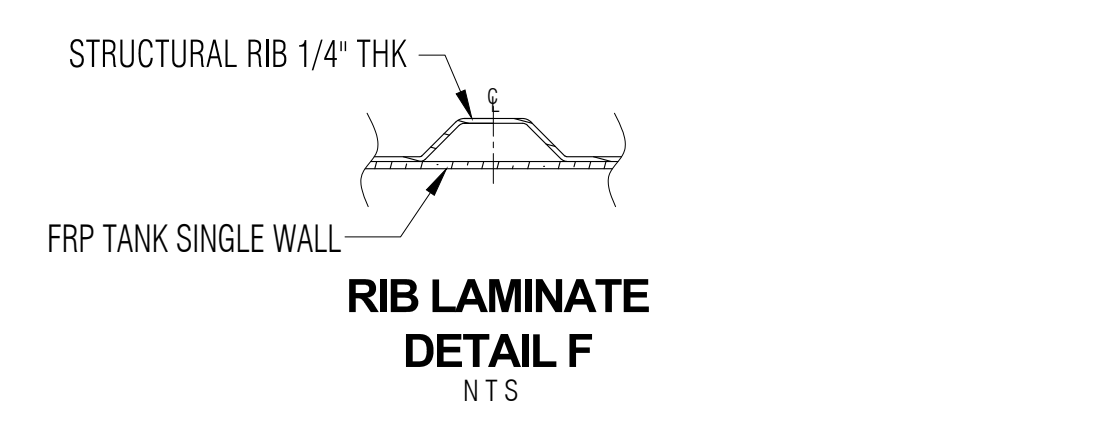
**SECTION C**



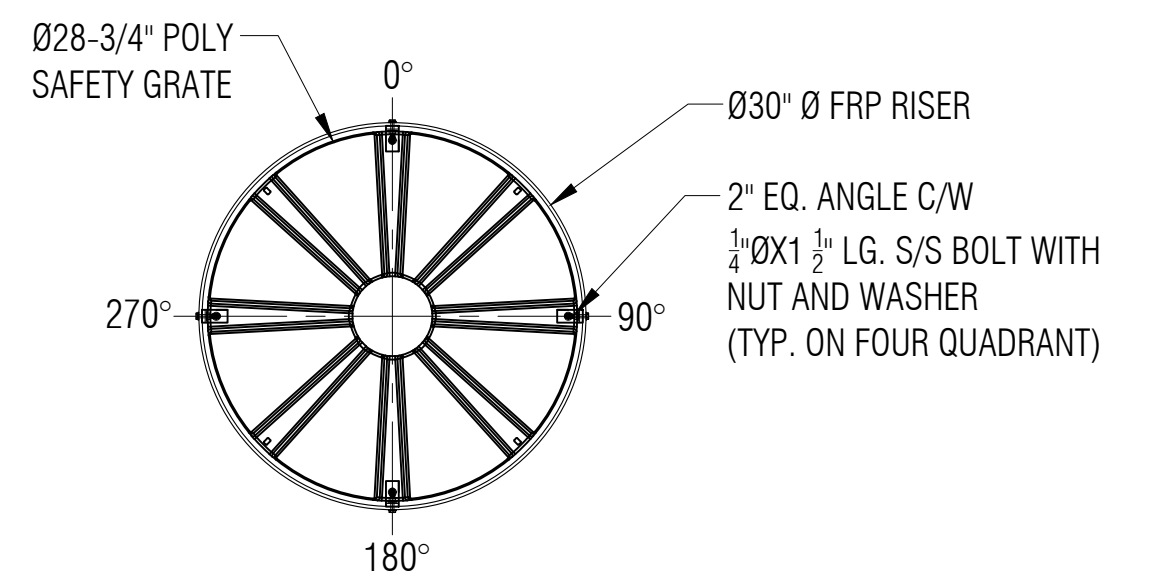
**TYPICAL BODY JOINT DETAIL D**  
NTS



**LAMINATE DETAIL E**  
NTS



**RIB LAMINATE DETAIL F**  
NTS



**SAFETY GRATE DETAIL G**  
SCALE: 1:15

LEGEND:  
 TOC - TOP OF CAP LID  
 TOF - TOP OF FLANGE  
 TOP - TOP CYLINDER  
 BOT - BOTTOM CYLINDER  
 I/S - INSIDE  
 LL - LIQUID LEVEL  
 O.A.H.-OVERALL HEIGHT  
 O.A.L.-OVERALL LENGTH  
 I/S - INSIDE  
 O/S - OUTSIDE  
 Ø - DIAMETER  
 ° - DEGREE/S  
 TYP- TYPICAL  
 CL - CENTER LINE  
 NTS - NOT TO SCALE

GENERAL NOTES:  
 - CSA B66 CERTIFIED FRP SEWAGE HOLDING TANK.  
 - RATED FOR 7' OF BURIAL DEPTH AND NO TRAFFIC LOADING.  
 - ALL DRILLED HOLES FLANGES TO BE COATED WITH RESIN.  
 - SAFETY DEVISE CAN WITHSTAND 91 KG. OF DEAD LOAD.  
 - DIMENSIONS SHOWN IN FEET INCHES FORMAT OTHERWISE NOTED.  
 - 1/2" FABRICATION TOLERANCE. DOES NOT APPLY TO LAMINATE THICKNESS.

ITEM#	QTY	PART LIST	DESCRIPTION	SHELL THICKNESS:	0.300"	DRAWN:	ATF
1	1	30" CAP LID W/ 8"Ø POLY SCREW OUT INSERT	FPR LID	DISH HEAD THICKNESS:	0.300"	CHECKED:	
2	1	30"Ø MANWAY COLLAR	30"Ø FRP COLLAR	RIBS THICKNESS:	0.25" WITH 1 WR	DATE:	MAY 31, 2023
3	1	4" PVC-DWV 90°	OULET	RIB SPACING:	16-1/2" CL TO CL	DESIGNED:	
4	1	MID STEEL	LIFT LUG	WEIGHT:	249KG (550LBS)	APPROVED:	MPS
5	1	4" PVC-DWV 90°	INLET	LENGTH:	3.048MM (10'-0")	MFG:	DS
6	1	SAFETY GRATE C/W HARDWARE	SAFETY GRATE	WORKING CAPACITY:	4,321 L (950IG/1,140 USG)	QA:	GA
7				OVERALL CAPACITY:	4,546 L (1,000IG/1,200 USG)	SALES:	TA

CLIENT: FRP/MOCOAT FIBERGLASS LTD.  
 TITLE: **T1000 FRP TRICKLE TANK**  
**FRP MOCOAT**  
 FIBERGLASS LTD.

SIZE: C	DRAWING NUMBER: T1000	REVISION: 0
SCALE: 1:20	WEIGHT:	SHEET: 1/1
BURIAL DEPTH:	RATED 7'-0"	